

SKU: XPOL700-900PL**Telco XPOL MIMO 13-16dBi Industrial Class Panel Antenna**

- Dual-polarised antenna feed with high isolation
- Industrial grade weatherproof PVC radome
- High gain, high F/B ratio
- Two integrated N Female connectors
- 700MHz 4GX with full Next-G & 3G fallback

This very heavy duty panel antenna provides an incredibly high gain over the Telstra and Optus 700MHz 4G networks, along with full fallback onto Next-G and 3G networks (850MHz and 900MHz). This antenna has been carefully designed to provide the highest practical gain on the new 700MHz 4G networks, ideal for long range Telstra 4GX and Optus 4G+ connections, and locations where signal strengths are extremely low.

Offering a very low VSWR and < -140dBc PIM, this antenna is not only ideal for tough receiver environments, but also suitable for broadcast and carrier operations.

See below for electrical & mechanical specification data.

Electrical Specifications

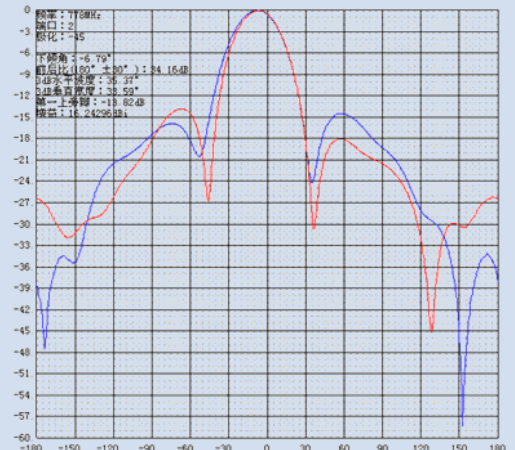
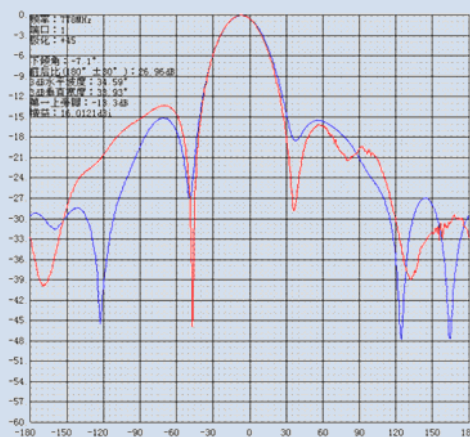
Frequency Range:	698-960MHz
Input Impedance:	50Ω
VSWR:	<1.6:1
Polarisation:	±45° (XPOL)
Vertical Beamwidth:	30° (± 10°)
Horizontal Beamwidth:	30° (± 10°)
Front to Back Ratio:	>25dB
Cross Pol Isolation:	>15dB
PIM IMD (3rd Order):	<-140dBc
Radiation:	Directional
Maximum Power:	100Watts

Radiation Patterns

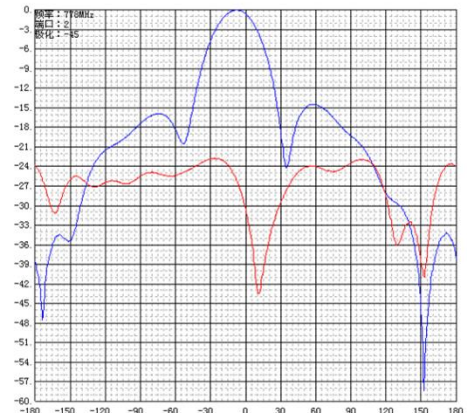
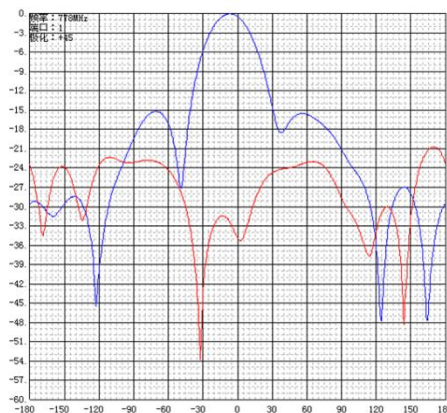
+45 Polarity

-45 Polarity

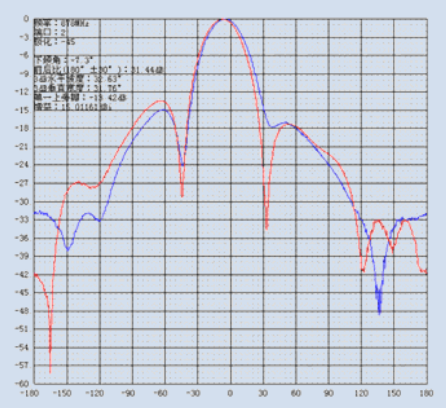
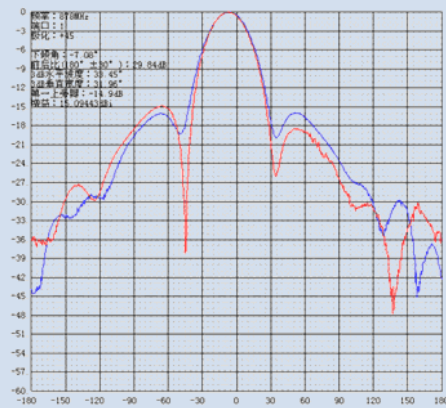
778MHz Vertical:



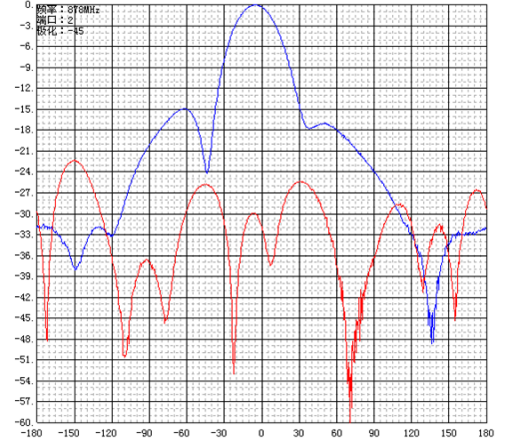
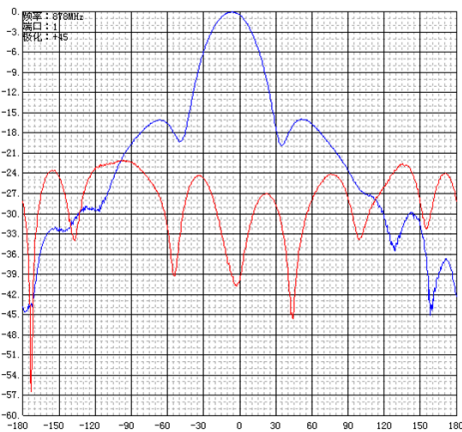
778MHz Horizontal:



885MHz Vertical:



885MHz Horizontal:



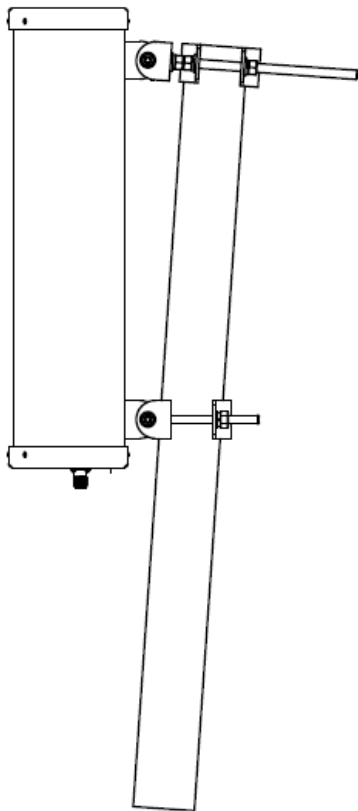
Test Item	Technical Requirement	Unit	Tested Frequency	Result	
				+45	-45
Frequency Range	698-960	MHz	Whole frequency band	698-960	
VSWR	≤ 1.6	/	698MHz	1.54	1.54
			723MHz	1.40	1.41
			778MHz	1.50	1.50
			840MHz	1.35	1.45
			885MHz	1.05	1.21
			960MHz	1.57	1.44
Gain	≥ 13	dB	698MHz	15.95	16.02
			723MHz	16.13	16.21
			778MHz	16.01	16.24
			840MHz	14.54	14.37
			885MHz	15.09	15.01
			960MHz	15.14	15.34
PIM 3rd	≤ -140	dBc	900MHz	-155	-151
Front to Back Ratio	≥ 25	dB	698MHz	31.42	36.31
			723MHz	33.20	33.21
			778MHz	26.96	34.16
			840MHz	30.41	31.56
			885MHz	29.84	31.44
			960MHz	33.58	31.75

Mechanical/Environmental Specifications

Construction:	PVC Radome, Galvanised Pole Mounting Brackets
Cable:	none
Connector:	2x N-Type Female (Low-PIM White Bronze)
Wind Rating:	198km/hr
Temperature:	-40°C +60°C
Weight:	12kg
Dimensions:	600 x 560 x 156mm (L x W x D)
Mounting	50-114mm Ø pole

CAD Drawing

Side View



Rear View

