

# 800 MHz Yagi Antennas

## 540-1000 MHz

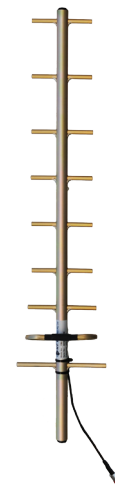
### YB809 Series



The YB809 Series are high gain Low PIM yagi antennas which provide excellent point to point communications in RF control, short or long haul link, point to multipoint and other applications calling for highly directional antennas. YB809 Series antennas exhibit narrow beamwidths and high front to back ratios to help minimise any potential interference to and from other systems.

YB809 Series antennas can be configured in stacks or bays for higher gain applications in either horizontally or vertically polarised systems.

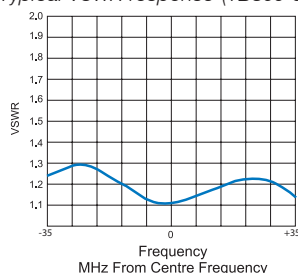
Termination is via an 'N' female coaxial connector fitted to a short 9302 Durathene cable tail. Durathene is a PTFE dielectric and polyethylene jacketed cable providing superior resistance to weathering and abrasion and is less susceptible to bird attack than standard PVC sheathed cables.



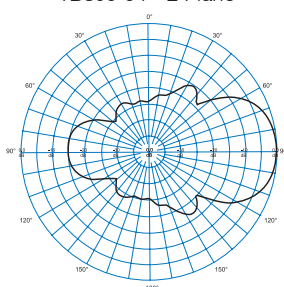
#### Features:

- All welded construction for maximum and reliable performance
- Narrow beamwidth & high front to back ratios effective in reducing interference
- Standard units feature alodine finish providing an excellent conductive surface for earthing. Full stainless steel versions also available
- Can be configured in stacks or bays for higher gain applications using PH and PHE series phasing harnesses
- DC grounding on all elements for the ultimate in lightning protection and dissipation of static noise

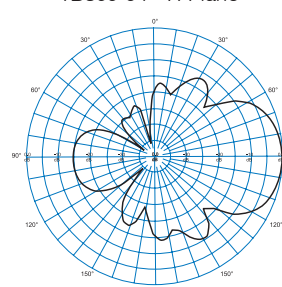
Typical VSWR response (YB809-94)



YB809-94 - E Plane



YB809-94 - H Plane



#### Electrical

Model Number	YB809-81	YB809-82	YB809-94	YB809-99
Nominal Gain dBi (dBd)	12 (10)			
Frequency MHz	806 - 896	850 - 930	890 - 960	540 - 1000
Tuned Bandwidth	Full band			5%
VSWR (Return Loss)	<1.5 :1 (14dB)			
Nominal Impedance Ω	50			
Vertical Beamwidth°	41			
Horizontal Beamwidth°	48			
Front / Back Ratio dB	16	18	15	16
Input Power W	100			

#### Mechanical

Model Number	YB809-81	YB809-82	YB809-94	YB809-99
Construction	All welded aluminium with alodined finish			
Length m	0.9	0.9	1.0	1.4
Weight kg	0.7	0.6	0.5	0.9
Termination	N female with short 9302 cable tail			
Mounting Area	100mm x 25mm diam. aluminium			
Suggested Clamps	1 x UNV			
Projected Area cm <sup>2</sup>	No ice	361	343	372
	With ice	878	842	874
Wind Load (Thrust) @ 160km/h N	43	41	44	70
Wind Gust Rating km/h	>240			
Torque @160 km/h Nm	15	13	16	40