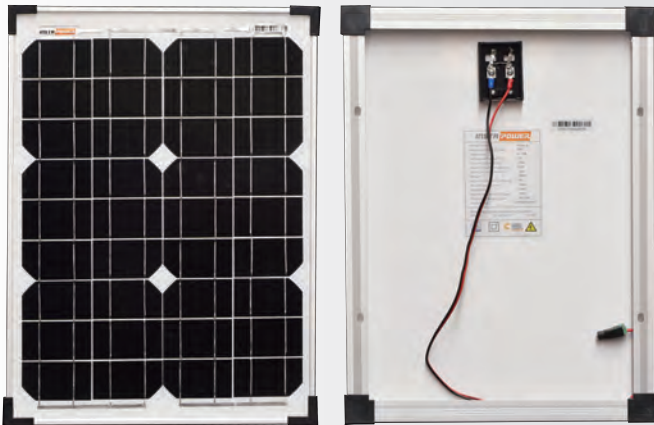


# SUPERIOR PERFORMANCE SOLAR PANELS

**INSTAPOWER**



**12V 10W Mono Panel**



**HIGH EFFICIENCY  
MONO CELLS**

**IMPROVED SHADE  
TOLERANCE**

**THE BRAND THAT YOU  
CAN TRUST**

\*Image may not be representative of specified wattage\*

## High Performance 12V Mono Solar Panel

- High efficiency solar cell delivers maximum power in a small footprint
- Thoroughly tested, a high-quality standard that you can rely on
- Guaranteed to provide the rated wattage under standard testing conditions
- Backed by industry-leading aftersales service and support
- Ideal for small to medium size off-grid solar energy system

Model	IP10M-18-360-260
Maximum Power(W)	10
Optimum Power voltage(Vmp)	18
Optimum operating current(Imp)	0.57
Open circuit voltage(Voc)	22.1
Short circuit current(Isc)	0.61
Size of module(mm)	360*260*17
Front glass thickness(mm)	3.2
Temperature range(°C)	-40 to +85
Tolerance wattage(%)	0/+3%
Surface maximum load capacity(Pa)	2400
Allowable hail load	23m/s,7.53g
Frame	Anodized Aluminium Alloy
Weight per piece(kg)	1.4
Standard test conditions	AM1.5,1000W/m <sup>2</sup> ,25°C(+/-2°C)
FF(%)	≥ 73.3

## CONTACT DISTRIBUTOR TODAY

Arizon Clean Energy Solutions  
6/29 Barry Street, Bayswater VIC 3153  
(03) 8736 9006 • [info@arizon.com.au](mailto:info@arizon.com.au) • [www.arizon.com.au](http://www.arizon.com.au)

