

SUPERIOR PERFORMANCE SOLAR PANELS

INSTAPOWER



12V 120W Mono Panel

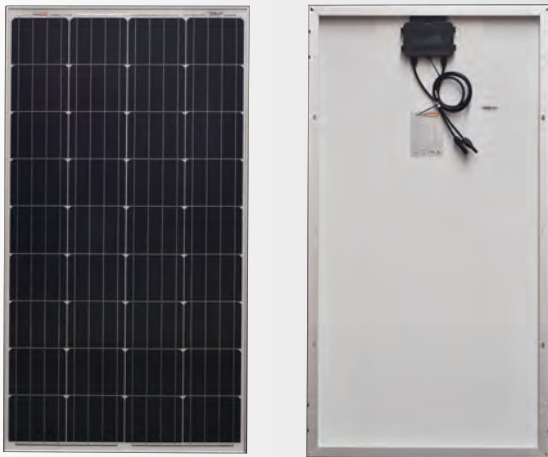


Image may not be representative of specified wattage

**HIGH EFFICIENCY
MONO CELLS**

**IMPROVED SHADE
TOLERANCE**

**THE BRAND THAT YOU
CAN TRUST**

High Performance 12V Mono Solar Panel

- High efficiency solar cell delivers maximum power in a small footprint
- Thoroughly tested, a high-quality standard that you can rely on
- Guaranteed to provide the rated wattage under standard testing conditions
- Backed by industry-leading aftersales service and support
- Ideal for small to medium size off-grid solar energy system

Model	IP120M-18-1250-670
Maximum Power(W)	120
Optimum Power voltage(Vmp)	17.8
Optimum operating current(Imp)	6.8
Open circuit voltage(Voc)	21.7
Short circuit current(Isc)	7.2
Size of module(mm)	1250*670*35
Front glass thickness(mm)	3.2
Temperature range(°C)	-40 to +85
Tolerance wattage(%)	0/+5%
Surface maximum load capacity(Pa)	2400
Allowable hail load	23m/s,7.53g
Frame	Anodized Aluminium Alloy
Weight per piece(kg)	9.5
Standard test conditions	AM1.5,1000W/m ² ,25°C(+/-2°C)
FF(%)	≥ 73.3

CONTACT DISTRIBUTOR TODAY

Arizon Clean Energy Solutions
6/29 Barry Street, Bayswater VIC 3153
(03) 8736 9006 • info@arizon.com.au • www.arizon.com.au

