

Phaseblocker 4.3-10 Male to Female Lightning Arrester - up to 6GHz

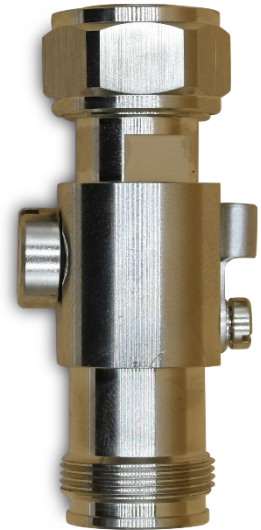
SKU: LA-4310-6GHZ

Gas tube lightning protection with excellent VSWR and superior RF performance characteristics for equipment operating DC to 6GHz with up to 90W RF power.

Male to Female arresters are designed for installation in-line between an antenna and feeder cable.

By installing at the tower-top position, this arrester helps protect not only the end user equipment, but the cabling itself.

When feeder lengths exceed 10-15m vertically a second arrester is recommended at the equipment end of the cable to protect against parasitic coupling.



Electrical Specifications

Frequency	DC-6GHz
Nominal Impedance	50Ω
VSWR	≤1.21
Insertion Loss	≤0.4dB
Return Loss	≥26dB
3rd PIM	≤-150dBc@2*43dBm
Power Rating	0-40W
Sparkover Voltage	≤90VDC
Voltage Protection Level @ 3kA (8/20us)	≤600V
Maximum Discharge Current	10kA
Maximum Operating Current	10A



Mechanical Specifications

Colour	Black
Connector	N Female
Operating Temperature	-35°C to +65°C
Environmental	IP65
Dimensions	250*115*51mm
Relative Humidity	5%-95%

Product Drawing

