

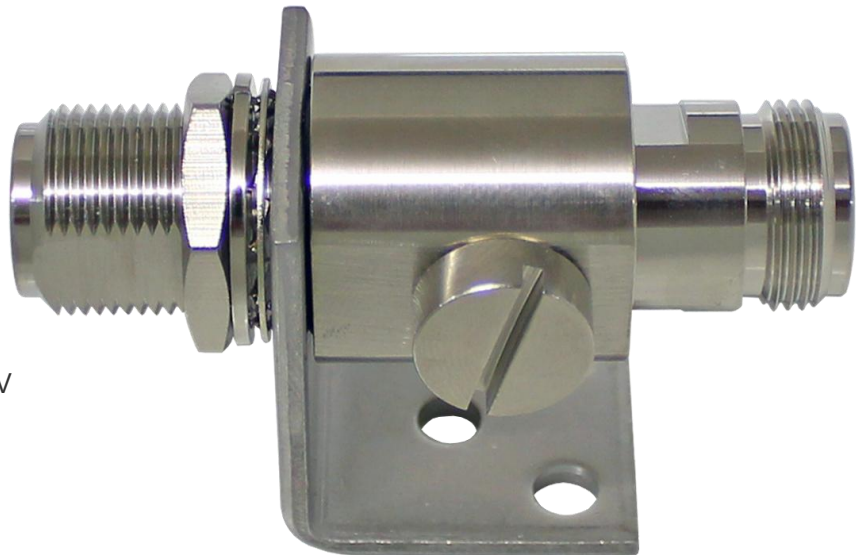
PRODUCT DATA SHEET

Phaseblocker N Female to N Female Bulkhead Lightning Arrester - 6GHz
LA-NFF-6GHZ

Gas tube lightning protection with excellent VSWR and superior RF performance characteristics for equipment operating DC to 6GHz with up to 40W RF power. Female to Female arresters are designed for installation in-line between coaxial cable joins. By installing at the bulkhead or cable entry position, this arrester helps protect equipment against parasitic coupling on long vertical feeder lengths.

Electrical Specifications

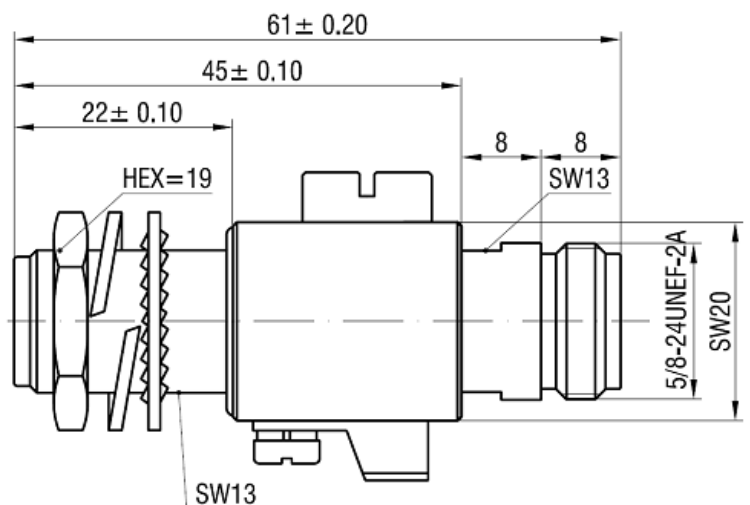
Frequency Range: DC - 6GHz
 Input Impedance: 50Ω
 VSWR: <1.2:1 DC-6GHz
 Insertion Loss: <0.4dB DC-6GHz
 Return Loss: >26dB
 Power Rating: 0-40W
 Sparkover Voltage: <90VDC
 Voltage protection level @ 3kA (8/20μs): <600V
 Maximum Discharge Current: 10kA¹
 Maximum Operating Current: 10A



Mechanical/Environmental

Construction: Nickel plated brass
 Durability: >500 cycles
 Connector: N Female Bulkhead to N Female
 Temperature: -55 to +85°C
 Humidity: 5-95% non-condensing
 Environmental Protection Level: IP55
 Weight: 135g
 Dimensions: 64 x 26mm (L x Ø)
 IEC 60169-16

1. @ IEC 61000-4-5 8/20μs waveform



RECOMMENDED MOUNTING DIMENSIONS

