

Installation Guide



NOTE

1, Only qualified personnel are allowed to install the antenna.

2, Appearance of the actual antenna may differ from the pictures.

Installation Tools

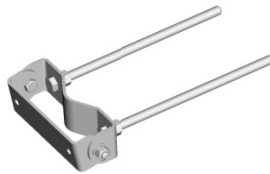


16mm combination spanner (2 PCS)
18 mm combination spanner (2 PCS)

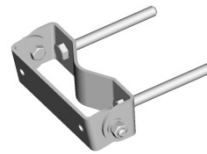


Inclinometer

Bracket Kits



(1 PCS)



(1 PCS)



(3 PCS)



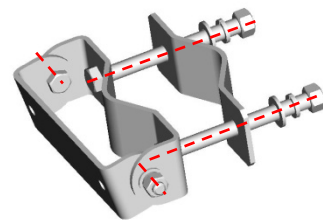
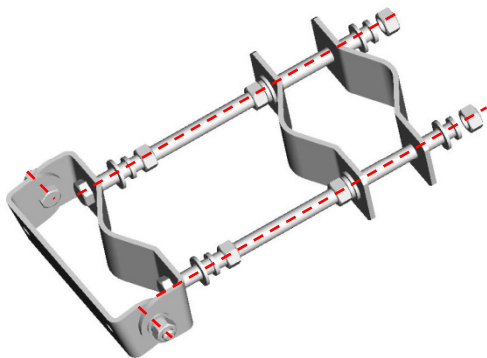
M12
(8 PCS)



M10
(4 PCS)

1

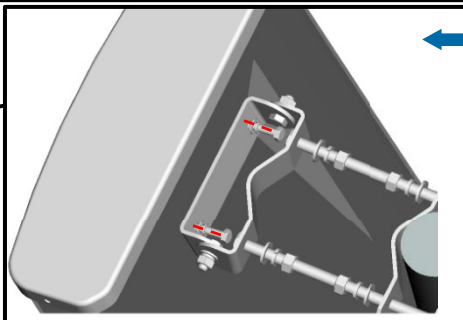
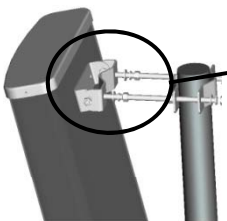
Bracket Assembly



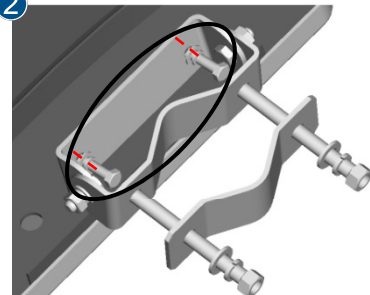
2

Antenna Pre-Mounting

1

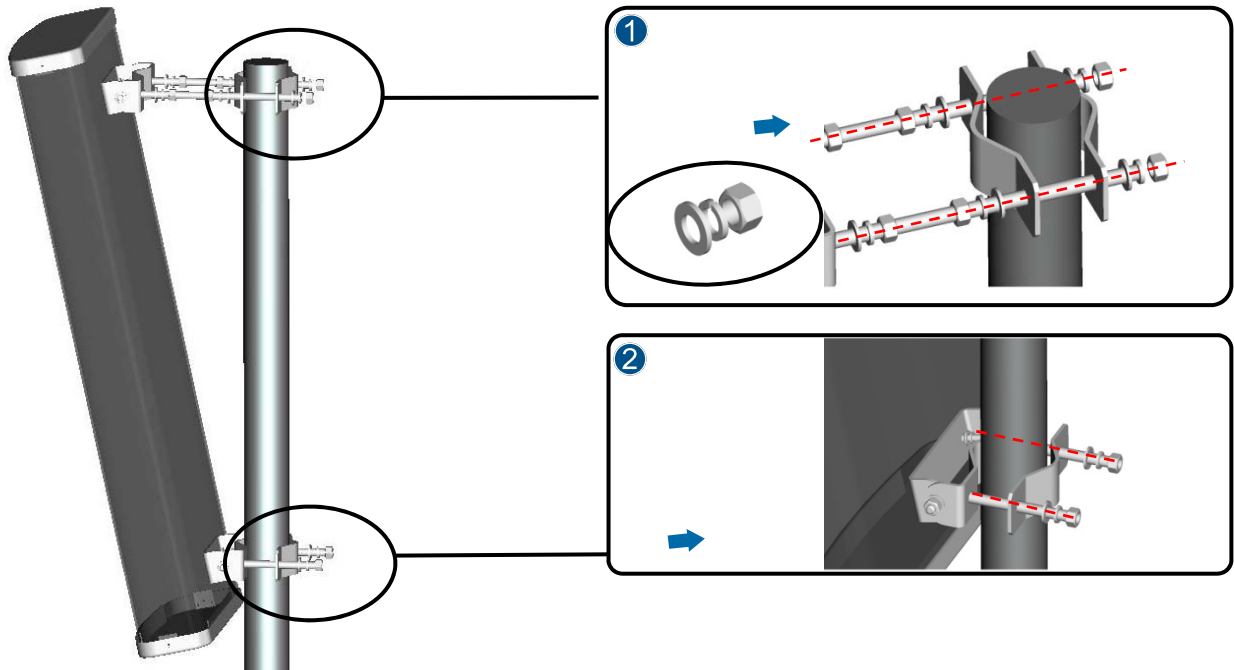


2



3

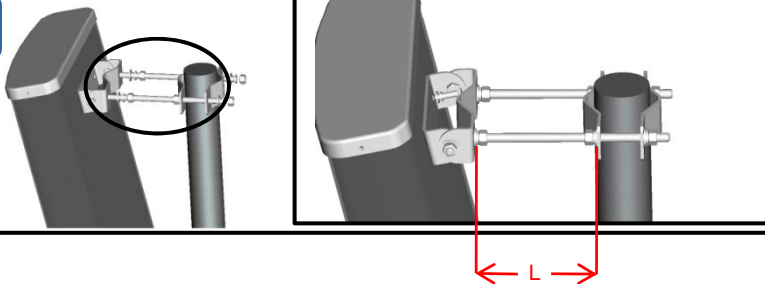
Whole Antenna Mounting



4

Mechanical Downtilt Adjustment

Method 1



Finally, tighten all the nuts.
Recommended torque:
M10= 18 Nm, M12=32 Nm

Refer to the table of angle and distance L, the downtilt angle can be adjusted by changing the distance L.

Table of angle & distance L

Downtilt angle	3°	4°	5°	6°	7°	8°	9°	10°	11°	12°
L	25mm	33mm	41mm	49mm	57mm	66mm	74mm	83mm	91mm	100mm

Method 2

Precise Measurement

Set the inclinometer to the desired downtilt angle before proceeding with any adjustment.
After adjustment, the mark of inclinometer should be horizontally in the middle.

