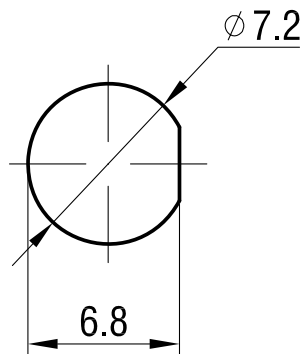


Mounting hole



Cable:RG223

Crimp Hex:0.213in. ( 5.41mm )

7	O-RING	SILICONE RUBBER	1	/
6	WASHER	BRONZE	1	GOLD
5	NUT	BRASS	1	GOLD
4	CRIMP FERRUE	BRASS	1	GOLD
3	SHELL/BODY	BRASS	1	GOLD
2	INSULATOR	TEFLON	1	/
1	CONTACT SOCKET	BERYLLIUM	1	GOLD
CODE	DESCRIPTION	MATERIAL	QTY	FINISH

2011-03-04

Register

Old base drawing number

base drawing number

signature

Date

dimensions in millimeter (mm)

Mark	Num.	File number	signature	Date
Design				
Drawing				
Check				
Approval				

Title  
**QSMA-C-KY223**  
 QSMA crimp type straight  
 Jack for RG223 cable

Part Number <b>JC3.660.645</b>			
Version	QTY	Weight (KG)	Scale
V1.0			
Total	Pages	The	Page

**OUTLINE DRAWING**

YangZhou JingCheng electronic CO.,LTD