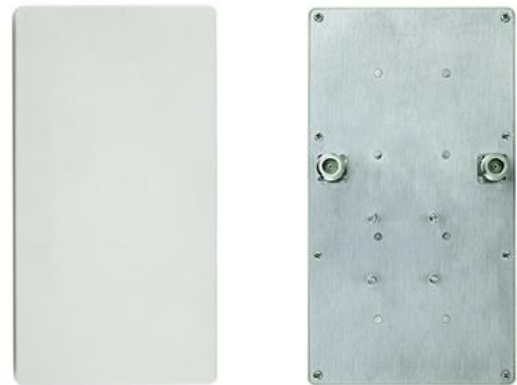




## Telco 2.4GHZ & 5.8GHZ Dual Band WiFi MiMo Panel Antenna - 8dBi

SKU: TA-2458-8-8

- Heavy duty industrial grade design
- 2.4/5 GHz IEEE 802.11a/b/g and 802.11ac applications
- UV-Resistant radome for all-weather operation
- Heavy duty steel mounting brackets
- Supports 1x2 and 2x2 MIMO AP/Routers
- Dual Integrated N-Female connectors



### Electrical Specifications

Frequency Range	2400 - 2500MHz	5150 – 5850MHz
Polarization	Vertical & Horizontal	
Gain	8±1dBi	8±1dBi
VSWR	≤1.7:1	≤1.7:1
Horizontal Beamwidth	65°±5°	65°±5°
Vertical Beamwidth	60°±5°	60°±5°
Front to Back Ratio	≥22dB	≥25dB
Input Impedance	50 Ω	
Max Power	50 W	
Lightning Protection	DC Ground	



## Mechanical Specifications

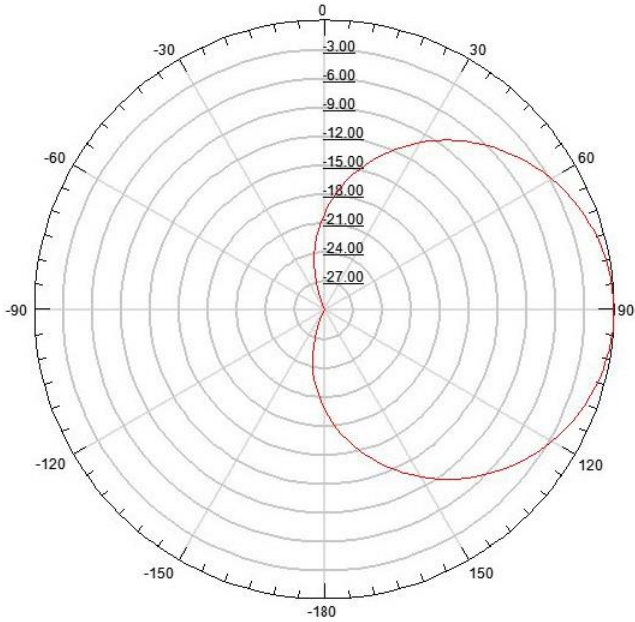
Connector Type	2 x N Female
Dimensions – L x W x H	190 x 190 x 25mm
Weight	0.6kg
Radiating Element	Aluminium
Reflector Material	Aluminium
Radome Material	UABS
Radome Colour	White
Mounting	Pole Mount Bracket Included (Φ40-60mm)
Operating Temperature	-40°C to 60°C
Wind Velocity	2400km/h (survival)





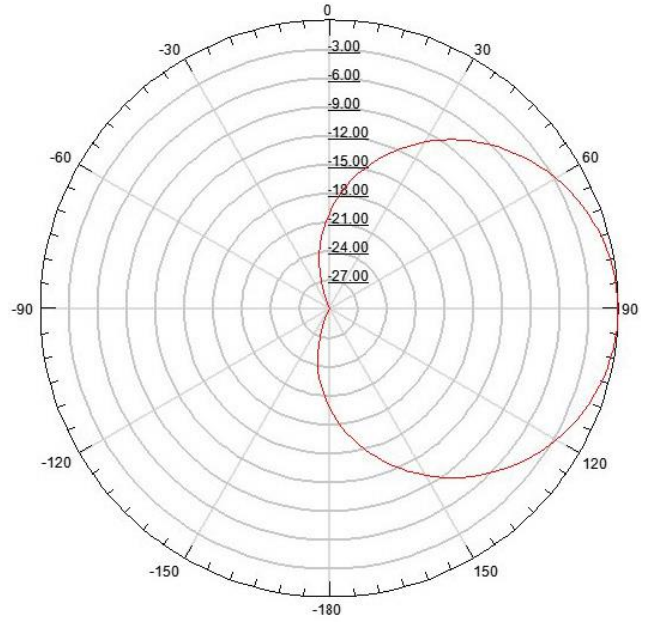
## RF Radiation Patterns

2450 – 2500MHz

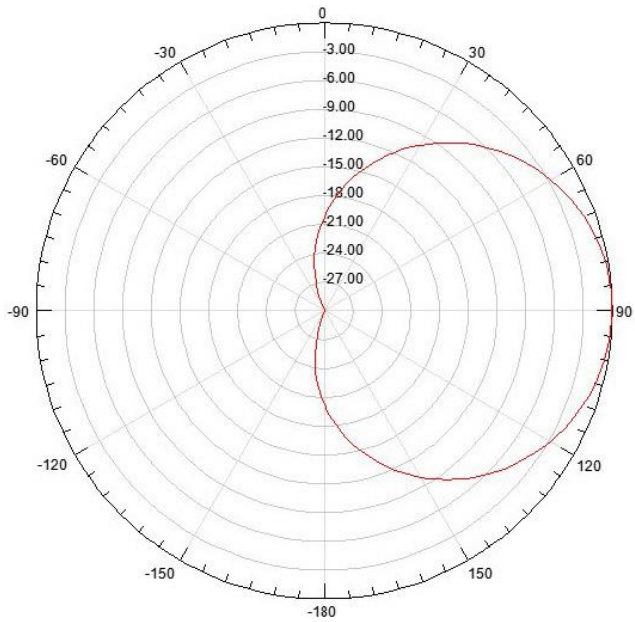


Horizontal

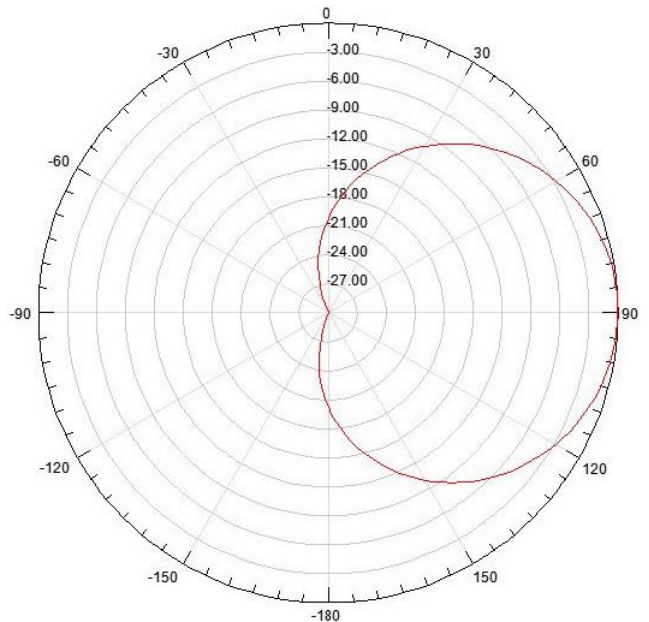
5150 – 5850MHz



Horizontal



Vertical



Vertical